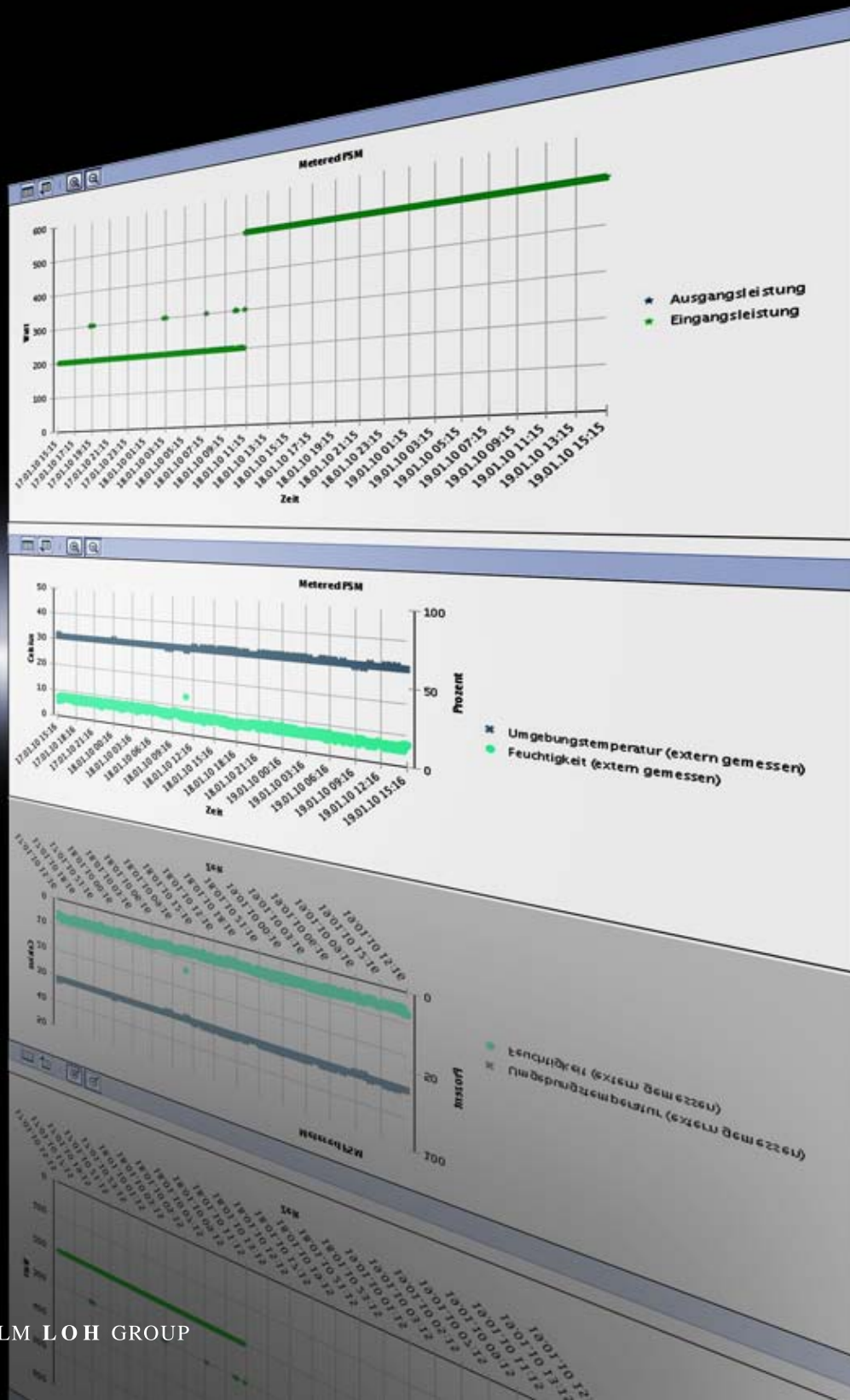
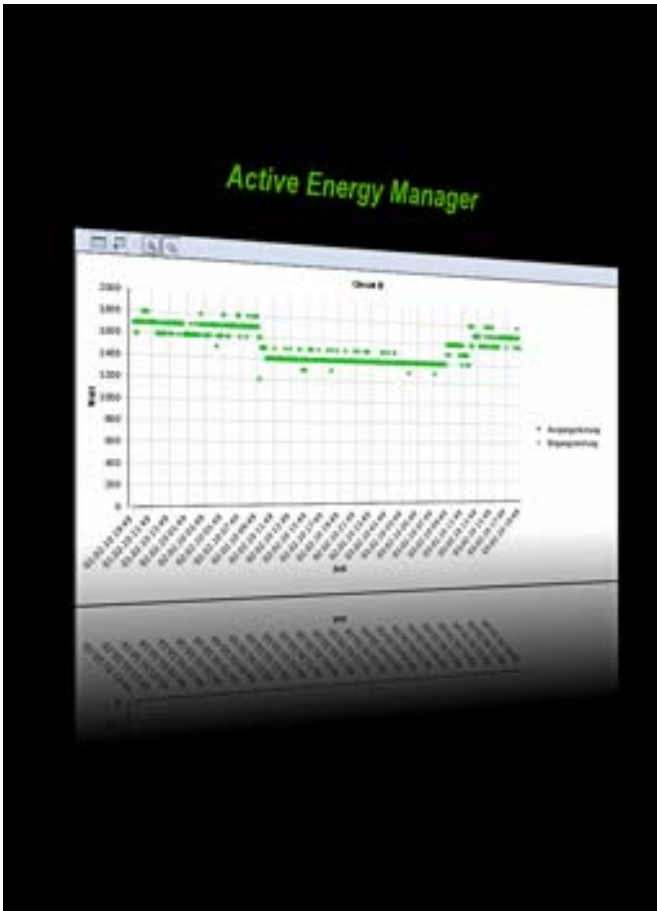


Rittal – with the IBM® Systems Director Active Energy Manager



IBM® Systems Director Active Energy Manager



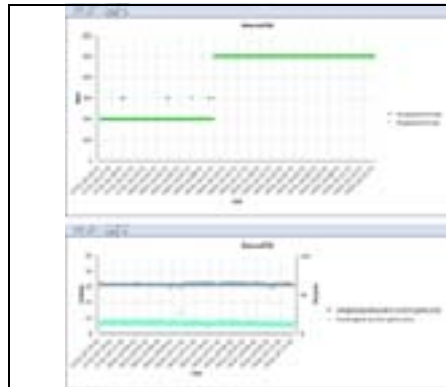
IBM® Systems Director Active Energy Manager Version 4.2 monitors, controls and gathers data from the integrated energy-related components of IBM® systems. This facilitates platform-independent management solutions. Through the integration of Rittal PSM busbars and sensors, the Active Energy Manager expands the scope of energy management to embrace servers from other manufacturers and permits system operators a more comprehensive overview of data centre energy consumption. In this way, trends in the current energy consumption and corresponding heat loads can be determined for both the IBM® systems and non-IBM® systems in the data centre environment.

Monitoring of IT energy costs

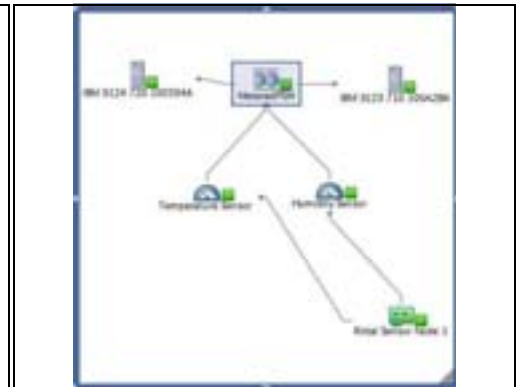
Energy	Energy costs	
Measured input power: 67.77 kilowatt-hours	Energy price	€ 0.12
	Cooling rate multiplier	1.5
	Measured energy costs	€ 20.33

Benefits:

- Determination of energy consumption for all rack components
- Monitoring of energy consumption for systems from other manufacturers
- Monitoring of conventional systems via power supply units
- Polling of temperature and energy data via Rittal CMC-TC sensors
- Recording of system operation alerts and events relating to the power supply and cooling systems



Energy consumption trend data and topology view



Further information:

www.rittal.de
www.rittal.com

<http://www-03.ibm.com/systems/management/director/plugins/actengmgr/>

E504 · 05/10

