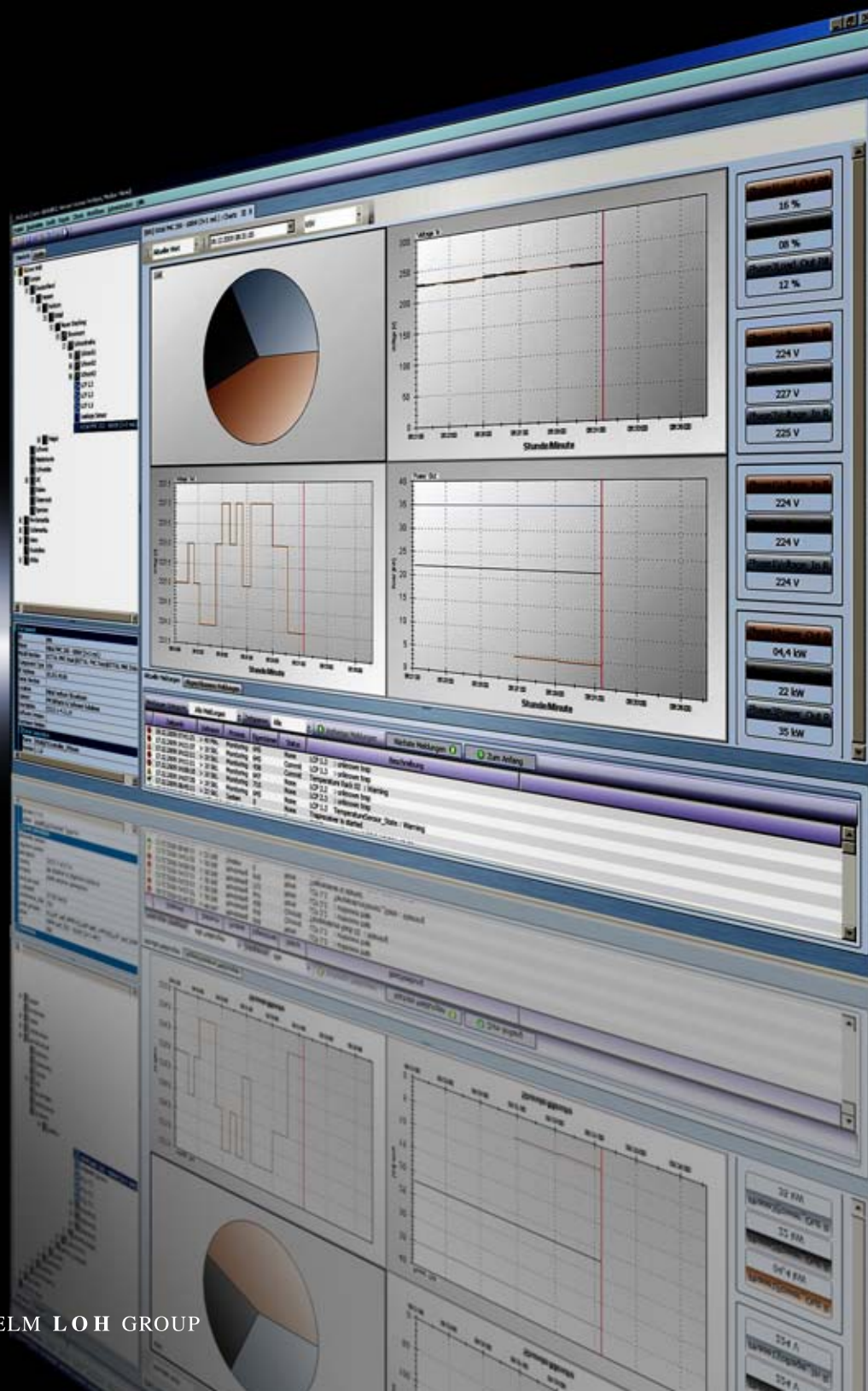


# Rittal and Phoenix Contact – Transparent energy measurement for data centres



# Transparent energy measurement for data centres



The acquisition of all relevant consumption values is an indispensable prerequisite for data centre control and optimisation.

The energy measuring system from Rittal and Phoenix Contact determines not only the total current load at the Ri4Power low-voltage distribution system, but also the values for the individual consumers.



## Energy measuring systems upon request:

Designation
Energy measuring system with Web server (TCP/IP/SNMP-UDP)
Energy measuring module, incl. 3 sensors (3-phase ~ 400 V/80 A)
Energy measuring module, incl. 3 sensors (3-phase ~ 400 V/250 A)
Energy measuring module, incl. 3 sensors (3-phase ~ 400 V/600 A)
Web panel (touchpanel) connection RJ 45 (TCP/IP)

Further ratings upon request.

## Benefits:

- Scalable system
- Simple installation
- Plug-and-play components



PSM_M-Unit [MeteredPSM]					
Circuit 1					
L1	L2	L3			
1306.8 kWh	210.8 kWh	902.4 kWh			
0.0 kW	0.0 kW	0.0 kW			
gt Status 1:1	Voltage Status 1:2	Voltage Status 1:3			
228.8 V	228.6 V	229.0 V			
red Status 1:1	Current Status 1:2	Current Status 1:3			
0.3 A	0.0 A	0.0 A			
Circuit 2					
L1	L2	L3			
1443.1 kWh	0.0 kWh	1640.1 kWh			
0.0 kW	0.0 kW	0.4 kW			
gt Status 2:1	Volt Status 2:2	Voltage Status 2:3			
229.4 V	227.9 V	227.3 V			
red Status 2:1	Current Status 2:2	Current Status 2:3			
0.0 A	0.0 A	2.5 A			
Pushbutton					
No Alarm					

## Consumption data at a glance

All measuring data in the network are made available via the Web server. Energy data acquisition and the triggering of alarms are controlled centrally. The modular design permits the connection of up to 96 measuring points. Configuration is automatic thanks to the "auto-detect" feature of the controller. The use of SNMP communication expands the functionality of RiZone to include intelligent power distribution. The option for connection of a network-enabled display facilitates full local control.

Together with partner Phoenix Contact, Rittal offers a consistent solution for the acquisition of all key performance parameters from the data centre. It permits conclusions to be drawn on the efficiency of both the data centre as a whole (PUE = Power Usage Effectiveness) and individual consumers such as the cooling system (EER = Energy Efficiency Ratio).

[www.rittal.com](http://www.rittal.com)

