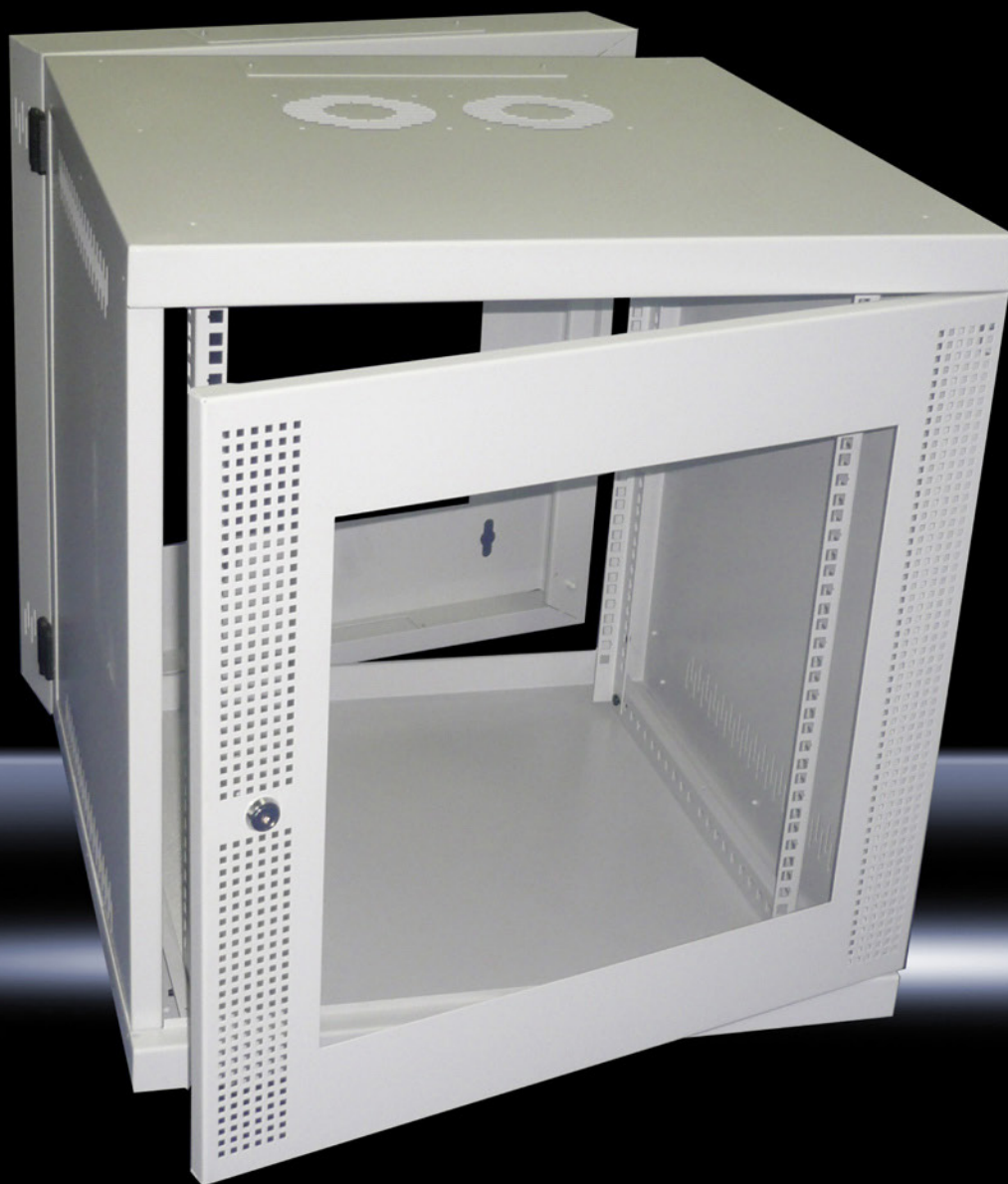


Rittal -

19" Wall Mount Enclosure



ENCLOSURES

POWER DISTRIBUTION

CLIMATE CONTROL

IT INFRASTRUCTURE

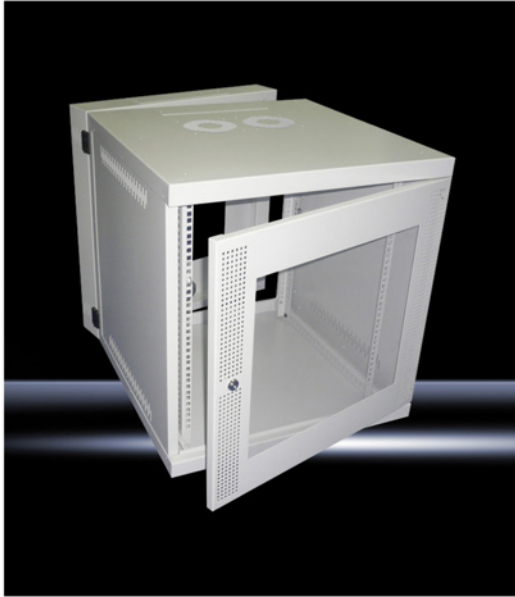
SOFTWARE & SERVICES

FRIEDHELM LOH GROUP



19" Wallmount Enclosure LWM

New Product Range



World leader in wall mounted enclosures for over 30 years.

Rittal is constantly innovating and engineering to ensure a quality that cannot be matched.

Designed for use in a range of IT environments, the LWM Series is well complemented by a range of accessories that further adapt the enclosures to any given application.

Model No.		XAU WM646	XAU WM646S	XAU WM1245	XAU WM1246S	XAU WM1846	XAU WM1846S
Dimensions mm	W	600	600	600	600	600	600
	H	6RU	6RU	12RU	12RU	18RU	18RU
	D	460	460	460	460	460	460

Model No.		XAU WM660	XAU WM1260	XAU WM1260S	XAU WM1860	XAU WM1860S
Dimensions mm	W	600	600	600	600	600
	H	6RU	12RU	12RU	18RU	18RU
	D	600	600	600	600	600

Features:

- All models come complete with acrylic doors
- Vented sides and doors
- Fully lockable
- Mounting rails fully depth adjustable
- Front and rear rails provided as standard
- Quick release, toolless hinges
- All units provisioned for fan units
- Surface Finish
 - RAL7035 (Grey)
 - RAL9005 (Black)*

Available In:

- 3 Heights (6RU - 12RU - 18RU)
- 2 Depths (460mm - 600mm)

Supply Includes:

- Enclosure
- LWMXXXS - Swing Frame

RITTAL Pty Ltd

Australia

130-140 Parraweena Road, Miranda NSW 2228 | 1800 350 665 | rittal.com.au

New Zealand

21 Bell Road South, Lower Hutt Wellington | 04 566 7630 | rittal.co.nz

* Available on request. Terms & Conditions Apply.

ENCLOSURES

POWER DISTRIBUTION

CLIMATE CONTROL

IT INFRASTRUCTURE

SOFTWARE & SERVICES

